

Collection of **ANORECTAL** samples:

Use the cobas[®] PCR Media Dual Swab Sample Packet

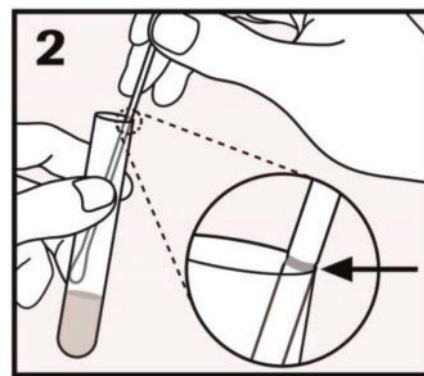
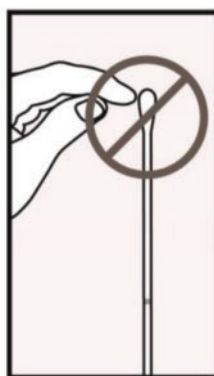
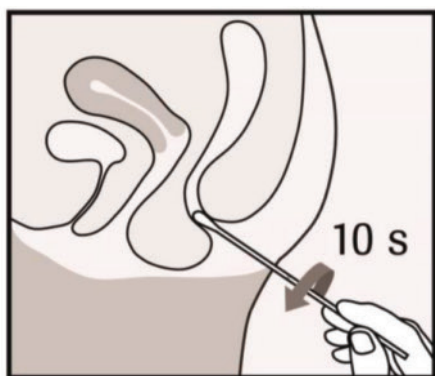
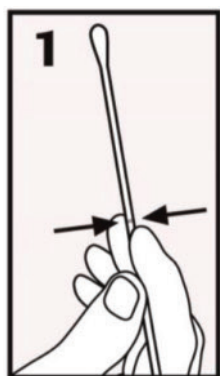
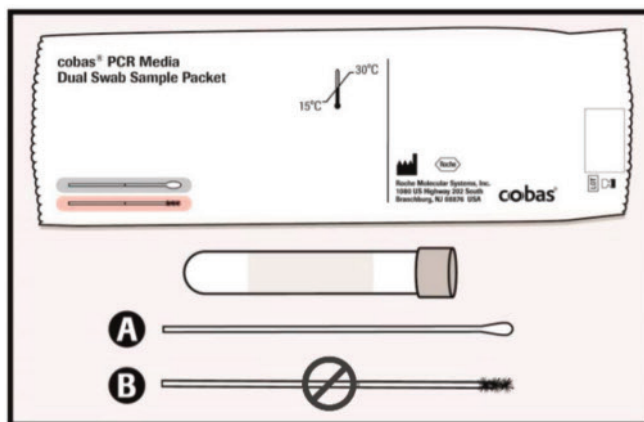
WARNING: DO NOT PRE-WET SWAB IN cobas[®] PCR MEDIA BEFORE COLLECTION!

The cobas[®] PCR Media Dual Swab Sample Packet contains:

- cobas[®] PCR Media Tube
- Woven Swab: A - use to sample
- Flocked Swab: B - discard

NOTE: Do NOT use flocked swab (swab B) for anorectal sample collection.

Please ensure only one swab (woven swab A) is placed into the media tube.



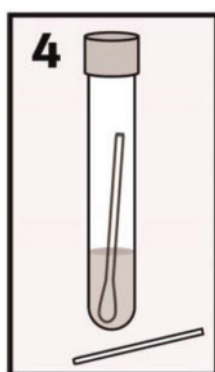
1. COLLECT: To collect the specimen, hold the swab with the scoreline above your hand and insert the swab about 3 - 5cm (1- 2 Inches) into the anal canal. Gently turn the swab for about 5 - 10 seconds while running the swab against the walls of the rectum. If the swab is grossly contaminated with faeces, discard and repeat the collection.

Withdraw the swab carefully. Do not let the swab touch any surface before placing it into the collection tube.

2. Remove the cap from the cobas[®] PCR Media Tube and lower the swab specimen into the tube until the visible scoreline on the swab is aligned with the tube rim. The bud of the swab should not be submerged into the liquid prior to breaking the shaft.



3. BREAK: Carefully leverage the swab against the tube rim to break the swab shaft at the scoreline.



4. CLOSE: Tightly re-cap the cobas[®] PCR Media tube. The specimen is now ready for transport. Discard the top portion of the swab.