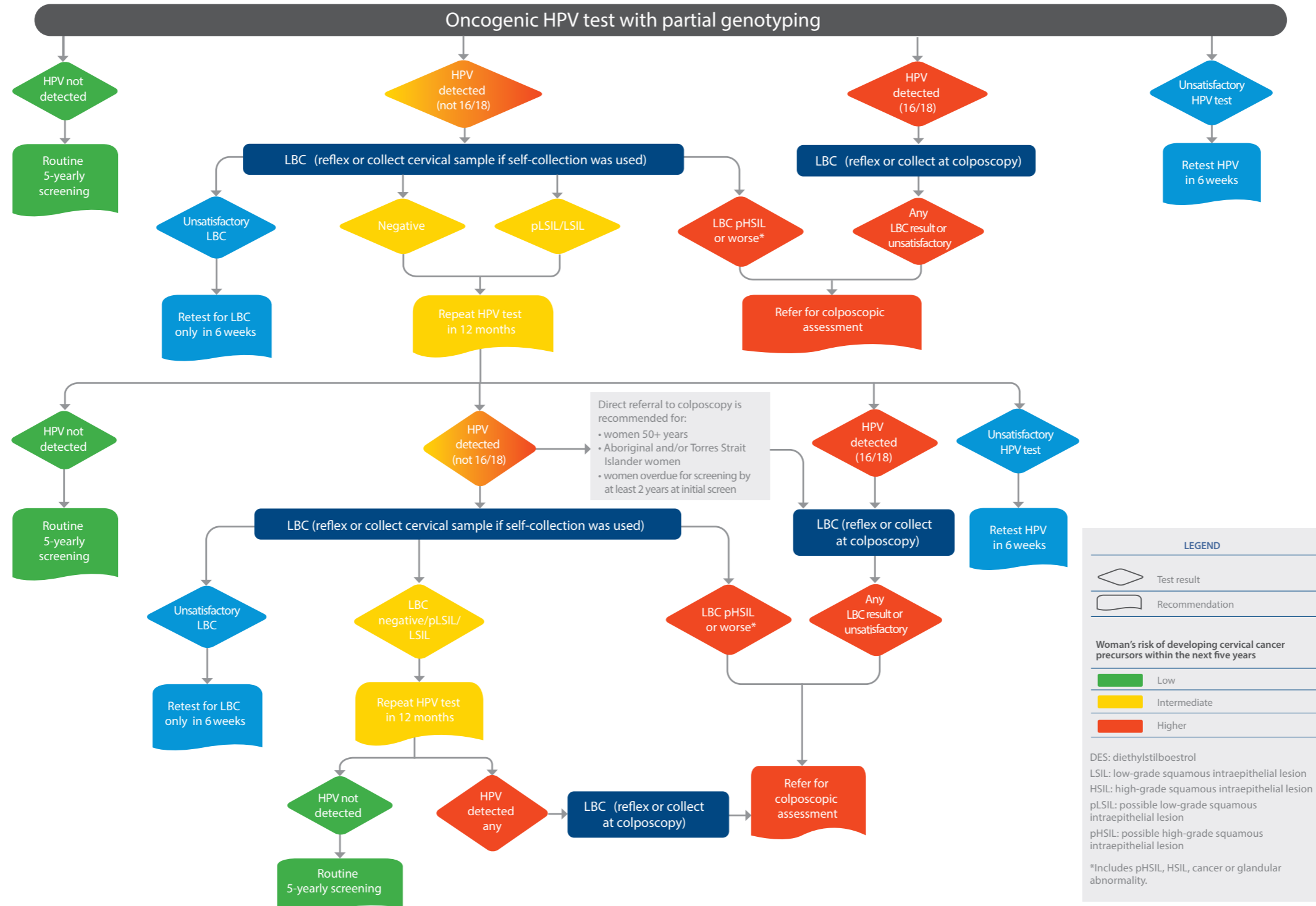




Cervical Screening Flowcharts

From 1st July 2022 the updated National Cervical Screening Guidelines will take effect

CERVICAL SCREENING PATHWAY FOR PRIMARY ONCOGENIC HPV TESTING

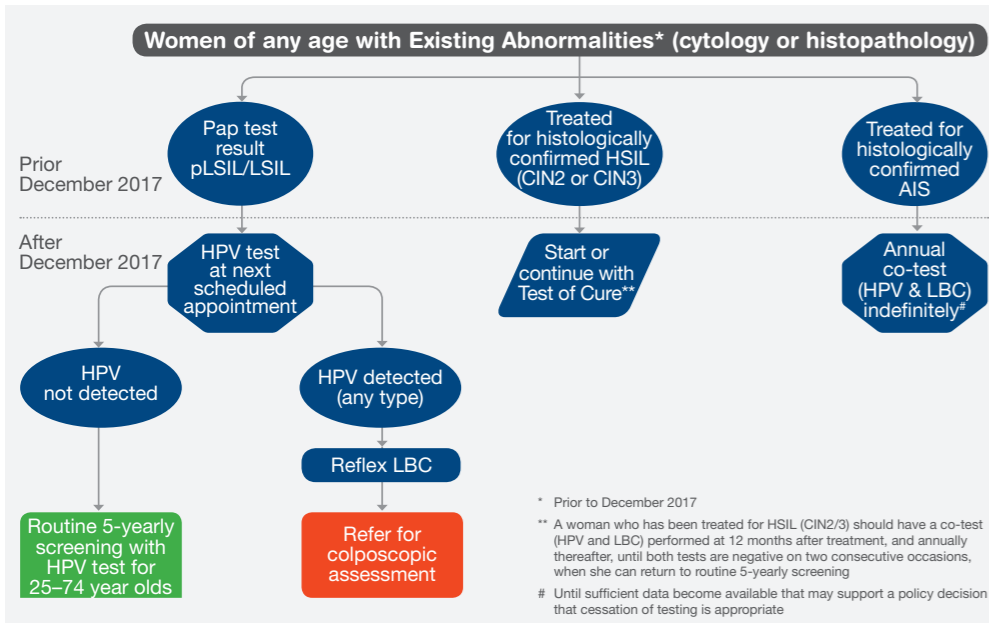


Source: National Cervical Screening Program: Guidelines for the management of screen-detected abnormalities, screening in specific populations and investigation of abnormal vaginal bleeding. CCA 2016. Accessible from <https://www.cancer.org.au/assets/pdf/cervical-screening-pathway-flowchart-6.1-july-2022>.

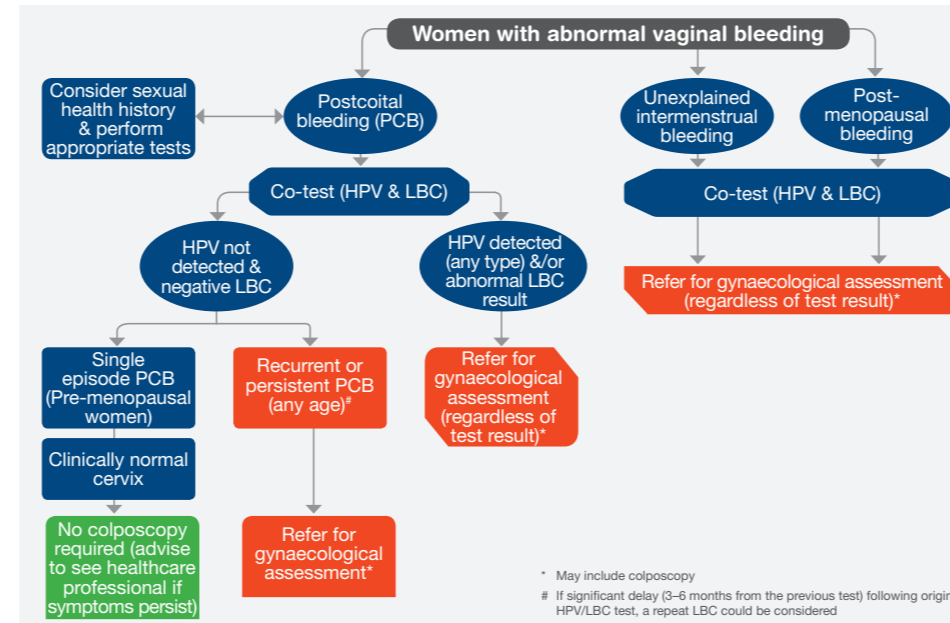
Cervical Screening Flowcharts



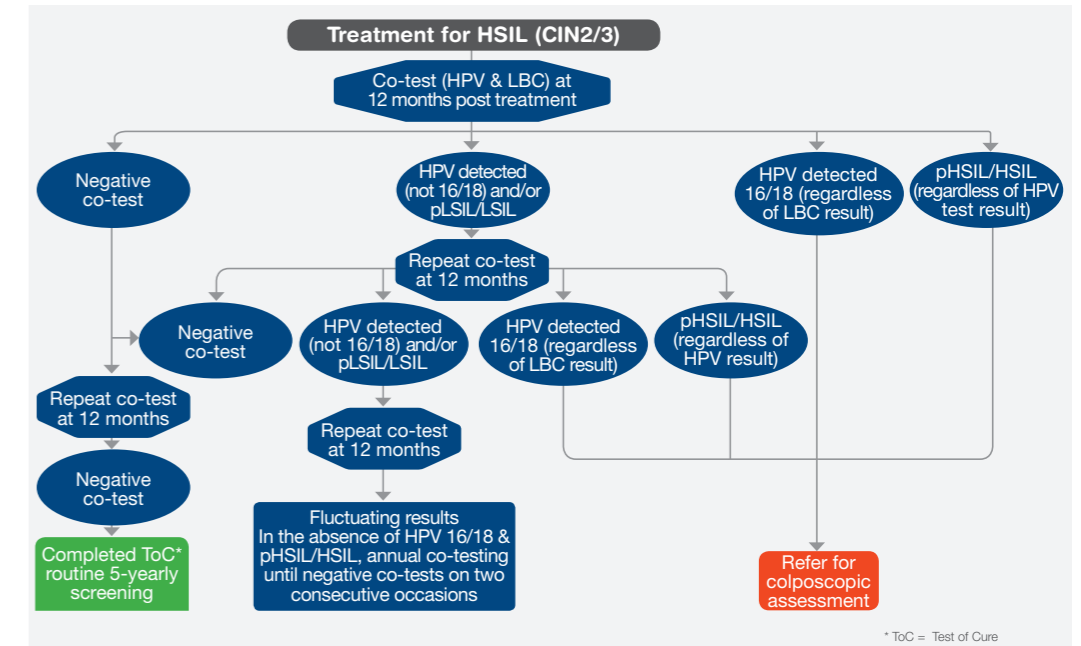
TRANSITION TO THE RENEWED NATIONAL CERVICAL SCREENING PROGRAM



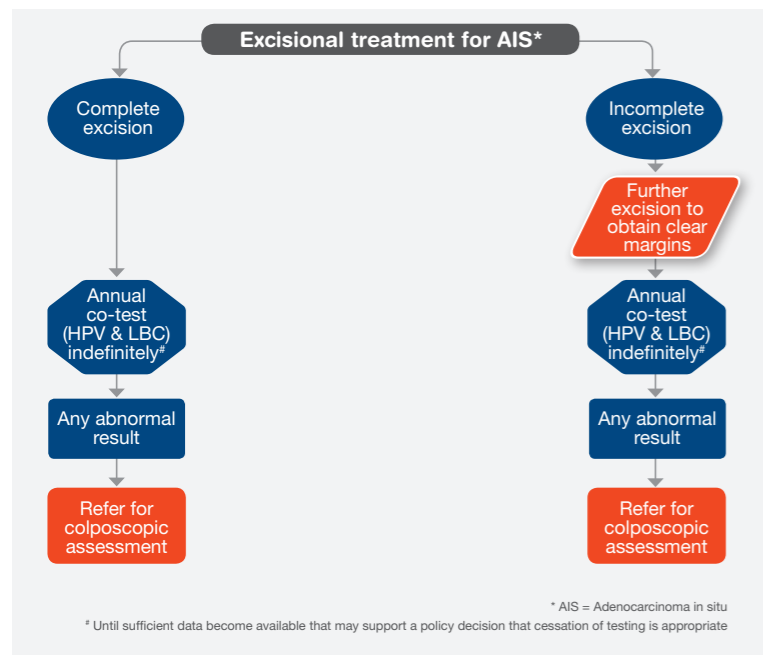
INVESTIGATION OF WOMEN WITH ABNORMAL VAGINAL BLEEDING



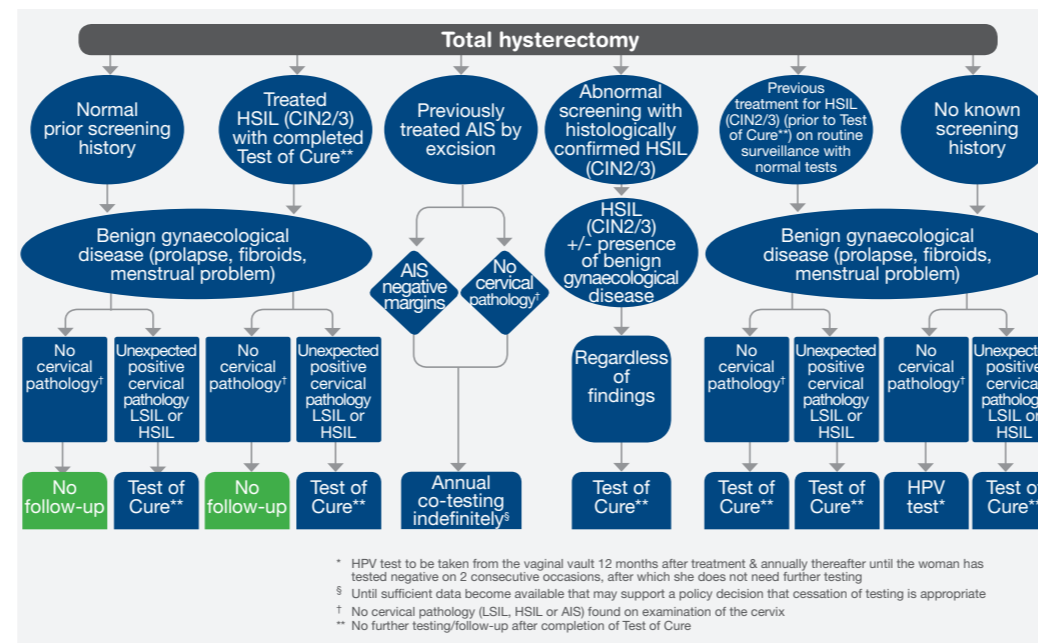
TEST OF CURE FOLLOWING TREATMENT FOR HIGH-GRADE SQUAMOUS ABNORMALITIES



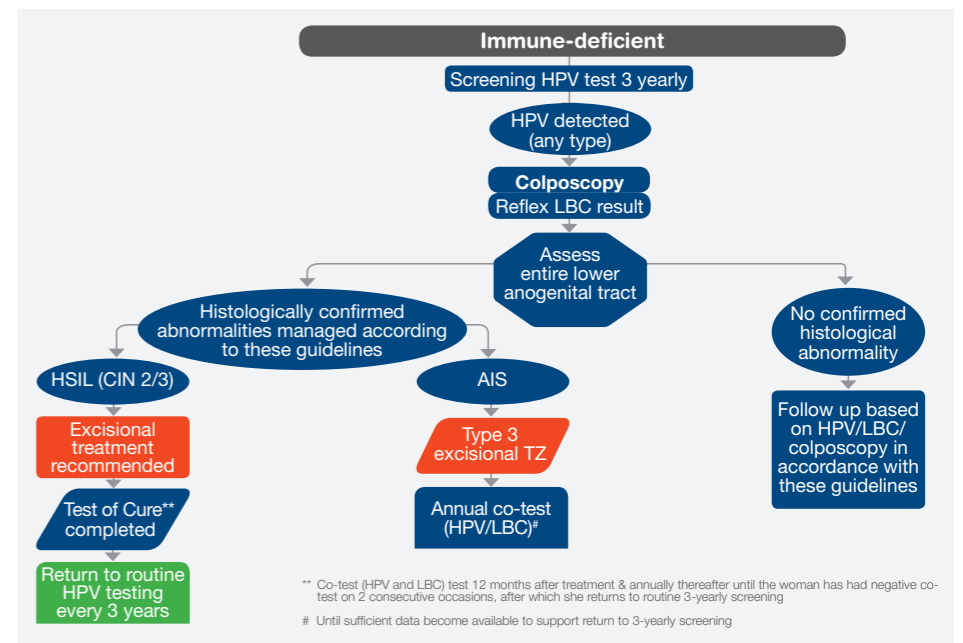
FOLLOW UP AFTER EXCISIONAL TREATMENT FOR AIS



VAGINAL SCREENING AFTER TOTAL HYSTERECTOMY



MANAGEMENT OF SCREEN DETECTED ABNORMALITIES IN IMMUNE-DEFICIENT WOMEN



Source: National Cervical Screening Program: Guidelines for the management of screen-detected abnormalities, screening in specific populations and investigation of abnormal vaginal bleeding. Cancer Council Australia, Sydney (2016)